

# ALTUS

DUBAI CREEK HARBOUR

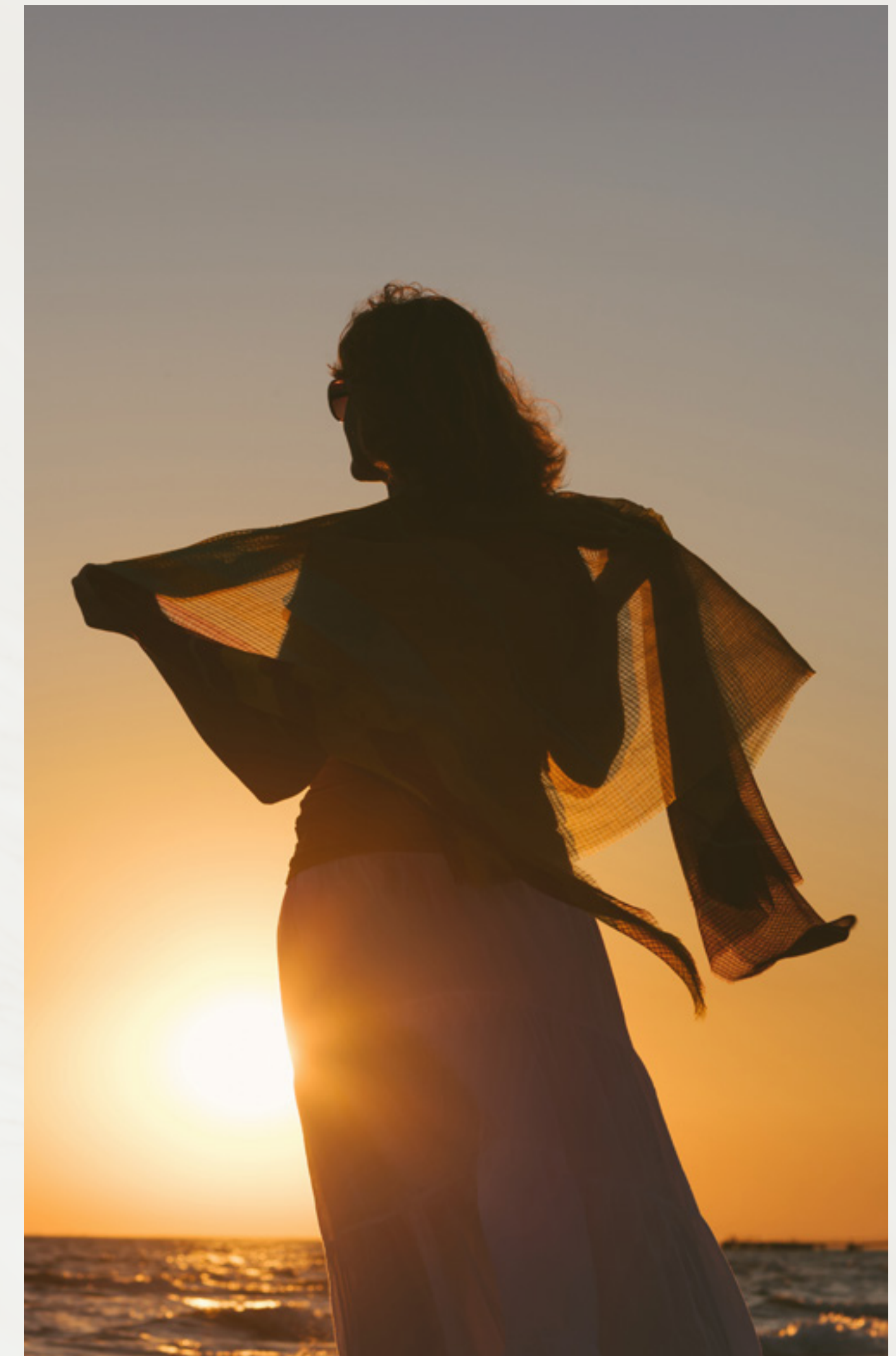
EMAAR

Elegance & Tranquility  
By The Creek

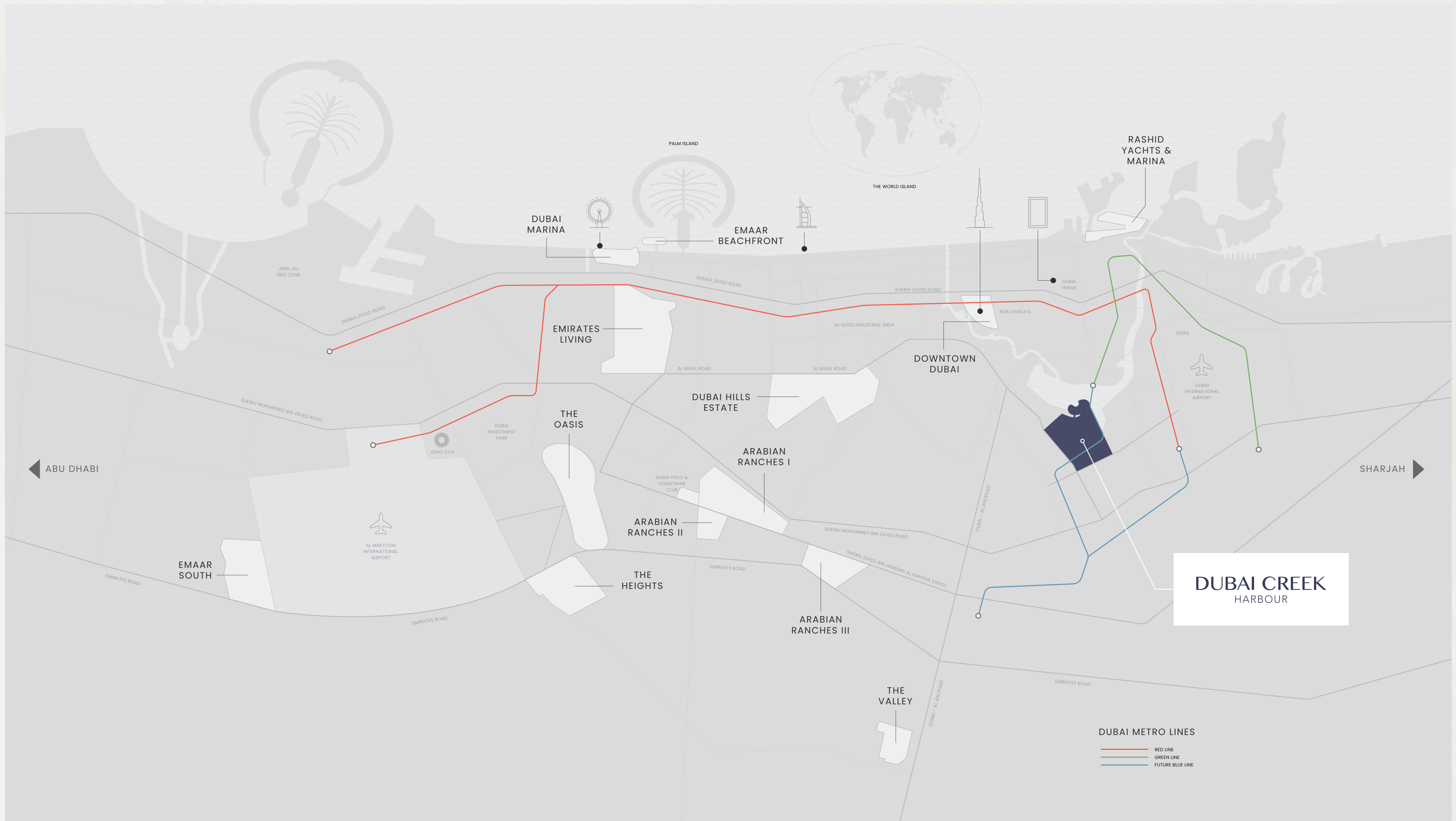


# Dubai Creek Harbour

Dubai Creek Harbour is an ultra-modern, stylish, and pedestrian-friendly neighbourhood that integrates with Dubai's sustainable urban character.



Situated along the historic Dubai Creek, Dubai Creek Harbour consists of 7.4 million sqm of residential space and 500,000 sqm of parks & open spaces with a viable mix of retail, business, recreation, and community facilities, all within walking distance.



# Perfectly Located

5  
mins from  
Ras al Khor Wildlife Sanctuary

10  
mins from  
Burj Khalifa

15  
mins from  
Dubai Int'l Airport

40  
mins from  
Al Maktoum Int'l Airport

Immerse in the  
Elegance of ALTUS



The Ultimate Definition  
of Modern Living





# Seamlessly with Natural Beauty

Perfectly located next to the central park and just a short walk from the urban beach, ALTUS seamlessly blends the lively energy of the city with peaceful natural retreats.

# Cultivating Wellness





# Amenities with a Touch of Class

ALTUS redefines luxury living, offering a lifestyle that is both stylish and convenient, setting a new standard in modern living.





Celebrating  
Community


# Experiences, Always Within Reach



Metro  
Connectivity



Elegant  
Clubhouse



Wellness  
Centres



State-of-the-art  
Gymnasium

# Sophisticated Living, Seamlessly





Live Beyond  
Ordinary



# Where Design Meets Comfort

ALTUS offers a diverse selection of city-inspired residences. The 1-bedroom units, perfect for the individual or couple, provide expansive living spaces and city views.

The 2 and 3-bedroom suites elevate the luxury experience, featuring modern bathrooms, spacious closets, and panoramic balconies, creating spaces that are truly at heart.



# Elegant Living, Sustainably Crafted

Embracing eco-innovation, ALTUS blends sustainable practices with architectural elegance, ensuring comfort while cherishing the environment.



## Water Conservation

Utilisation of condensate and planter drain collection for landscape irrigation, promoting efficient water use.



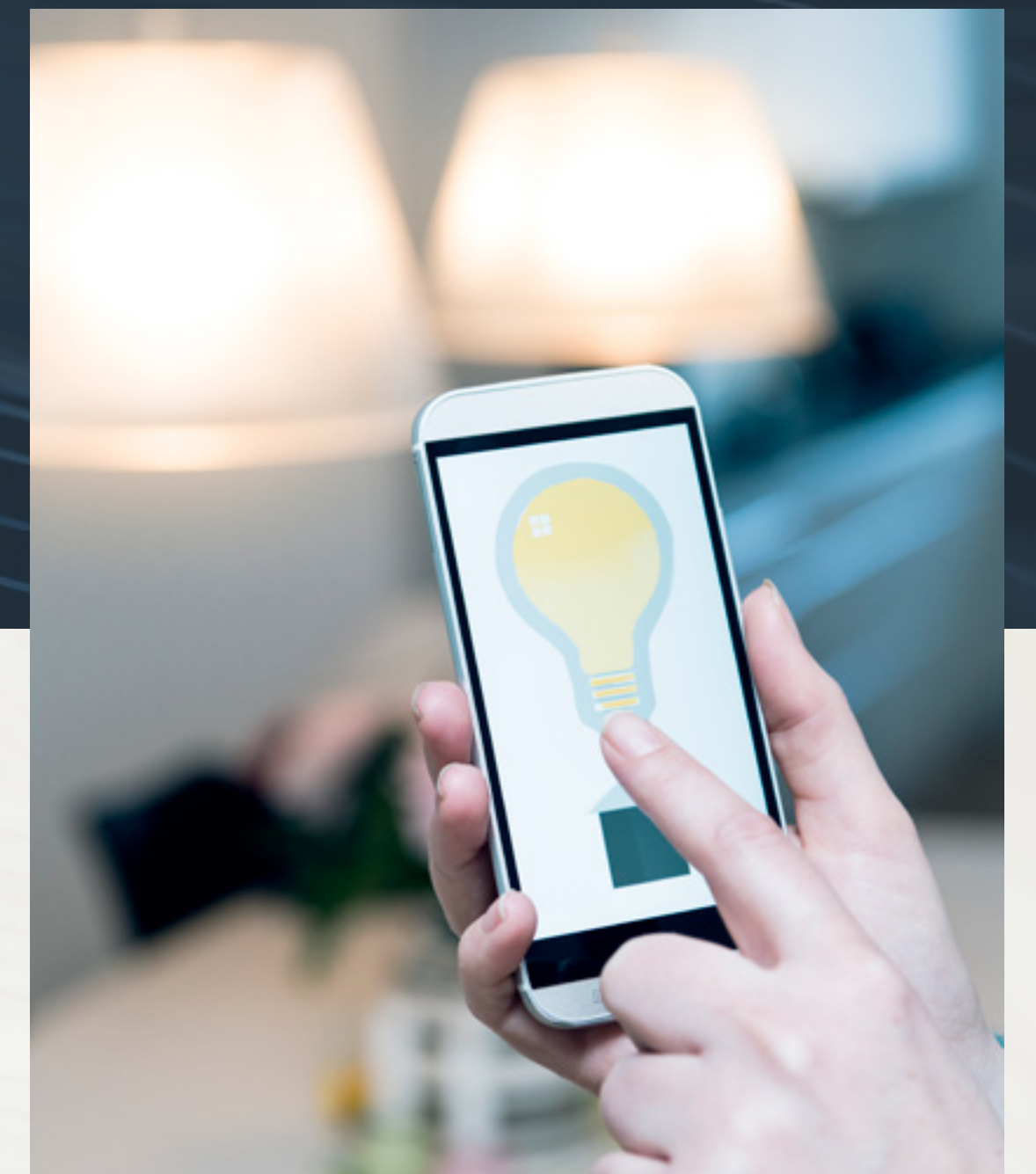
## Sun Protection

Architectural elements such as balconies, horizontal ledges, and tinted window glass minimise direct sunlight intrusion, ensuring cooler interiors.



## Green Integration

Emphasis on retaining existing vegetation for sustainability, reduced energy use, and enhanced environmental quality.



## Smart Lighting

Utilisation of condensate and planter drain collection for landscape irrigation, promoting efficient water use.





Nearby  
Attractions



# Creek Island

The Island District is a waterfront development that mixes upscale residences with enticing leisure and recreational amenities to create a world-class waterfront community.

The district's green central park, stunning marina, yacht club, and five-star hotels will all be popular destinations for residents to enjoy the district's breath-taking views and memorable experiences.



Breath-taking  
Sunset Views



Licensed Bars &  
Restaurants



5 Min from Creek  
Marina Yacht Club



Vida  
Creek Harbour

# Creek Marina

With a wide variety of retail, dining, and recreational options, Creek Marina never slows down. Landscaped pedestrian walkways offer stunning views of Downtown Dubai at dusk, while world-class art pieces add another layer to the trendsetting lifestyle.



Food Trucks



Vida Creek Harbour



Yacht Club Marina with 81 Berths



Art Installations



Address Hotel



Sculptural Viewing Deck





# Central Park

The heart of island living, Dubai Creek Harbour's Central Park offers residents a tranquil refuge to unwind, first-class amenities to enjoy, and wide-open spaces to discover. With a total area of six football fields, Dubai's Central Park is one of the largest parks in the emirate and offers a variety of activities for the whole family.

  
Kids' Play Area

  
Lawn Amphitheatre

  
Skating Areas

  
Dog Park

  
Splash Pad Fitness Plaza

# Viewing Point

Spanning 70 metres over Dubai Creek, the Viewing Point's audacious cantilever grants unmatched vistas of Downtown and the majestic Address Grand towers.

Seamlessly integrated into the Creek's blueprint, this architectural marvel, crafted from painted steel, stands as a bustling nexus for sightseers. Elevated, panoramic, and buzzworthy, it's Dubai's newest sunset rendezvous, open for all to revel in.



# EMAAR



## Global Lifestyle Developer

As one of the most valuable and reputable real estate developers in the world, Emaar aims to provide world-class design and unrivalled products in the most desirable locations.

The Group's portfolio consists of large-scale integrated residential developments, shopping malls, hotels, entertainment, and leisure destinations. Some of Emaar's most iconic landmarks include Burj Khalifa, the world's tallest building.

Under Development

27,000+  
Residential Units

Revenue AED

24.9 BN  
FY 2022

Net Profit AED

6.8 BN  
FY 2022

Delivered

85,000+  
Residential Units

Presence in

12+  
Global Markets

Market Cap AED

51.8 BN  
FY 2022

\*As in 31 December 2022

# ALTUS

DUBAI CREEK HARBOUR

For more information

Please call / WhatsApp Trupti Nair on

00971 507851492

Email:

[trupti@homeloungeuae.com](mailto:trupti@homeloungeuae.com)

EMAAR